

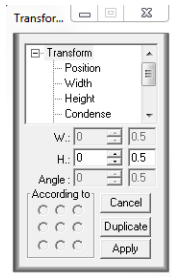
WINPC, HOW –TO BASICS

Text and Fonts:


1. To add text to a project, click the **T** icon, and begin typing.
2. If you need to change the font, click the **F** icon, and you can select a new font from there. This will now become the default font until you change it again.

Resizing:

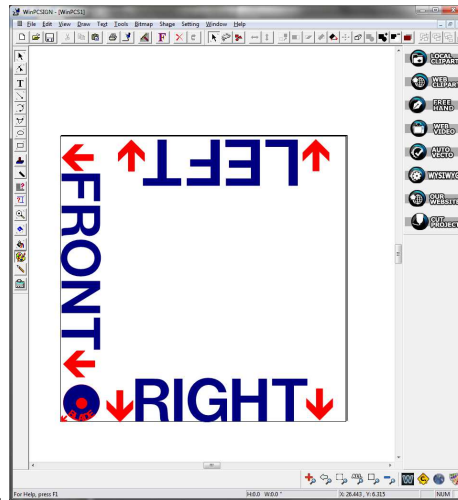
1. To resize an object or text, select it. From there, you can either resize two ways:
 - a. The first way is by clicking and dragging on the squares of the bounding box.
 - b. The second way is to adjust the width and/or height by specific numbers from the transformation window by clicking on Width, Height, or Condense.



How to use the Cutting Panel:

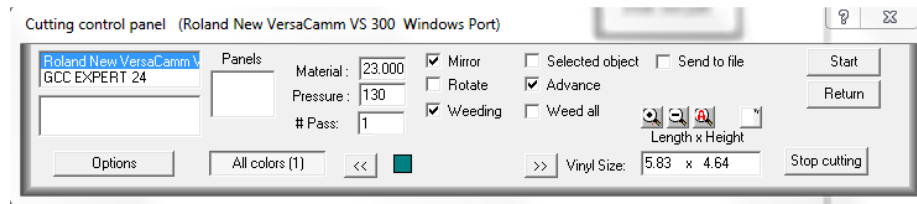
1. Click on the  icon. This will bring up the cutting panel. Important things to note here:
 - a. You can either click “All colors” to send all colors, or you can click on a certain color to only send it to the cutter
 - b. If you are cutting Particle Glitter or Rhinestones, change “#Pass” to 2.
 - c. If you are cutting for heat transfer, check the “Mirror” box.
 - d. To make it easier to weed and get your pattern ready to go a surface, check the “Weeding” box to let the cutter cut a box around your pattern.

- e. This is how the page is oriented on the screen, and how it will actually send to the cutter. In order to save vinyl, you should always drag your objects to the bottom left






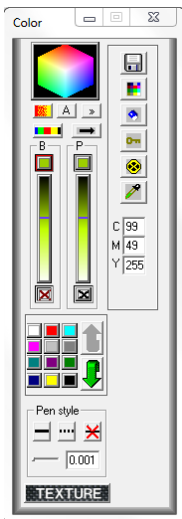
hand corner.

- f. When you are done, click "Start" to send to the cutter.




Sending Colors to the Cutter:

1. If you have multiple colors on your project, but they do not show up on the Cutting Panel , this is probably because your objects have a pen line. To remove the pen line, select the object and then click the  under the Pen color selection from the  color pallet.

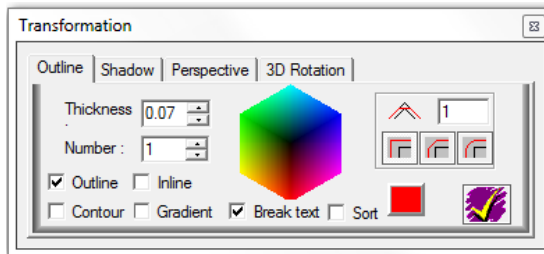


How to view the cutting lines:





1. If you want to see exactly where the cutter will cut, press the  icon at the bottom of the screen. You can press it again to turn it back off.

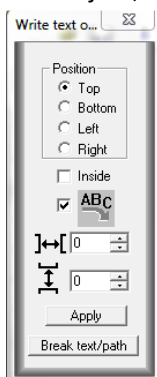
Outline Text:

1. Click on some already created and text. From there, click on Tools, then Outline.
2. You can adjust the thickness by changing the numbers in the “Thickness” box. You can change the color by clicking on the colored square in between “Sort” and the check mark (shown in **red** below). Be sure to click on “Break text,” otherwise the outline and the text will become one grouped object. When you are satisfied, click the checkbox to apply.




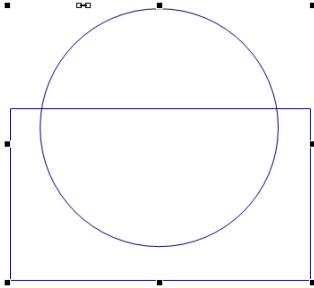
How to Arch text

1. Create some text, then draw a circle by clicking the  tool on the left. If you would like to ensure that the two objects (the circle and the text) are centered against each other, select them both then click the  icon. This will bring up a new set of tools near the top right. From there, click  icon (NOTE: NOT the  icon, that will center it on the page).
2. Once both items are selected, click on Text then Fit text to circle. Once you tweak the settings to your satisfaction, be sure to click “Break text/path” such that the text and the circle do not become one object, and the circle can now be deleted.



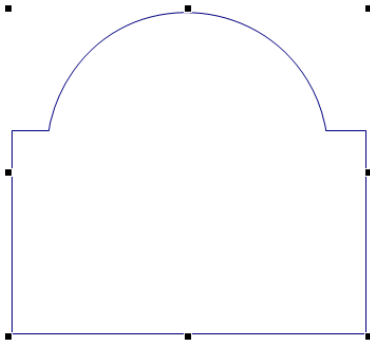
How to Weld:

1. If you have two objects that overlap, check the  cutting lines. If they overlap like this




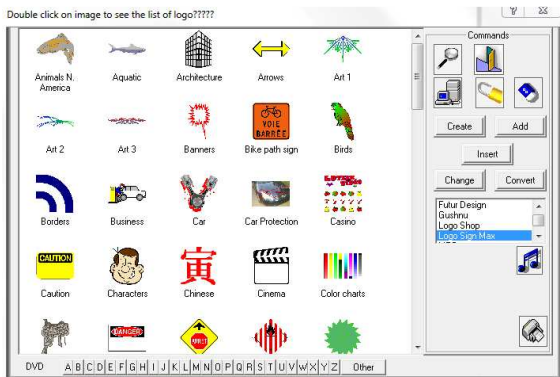
then you should weld them together.

2. To do this, select both objects and go to Tools, Welding, then Welding Plus and then your objects should look like this



How to add stock clip art:




1. Click on the  button located at the top right. This will bring up this screen

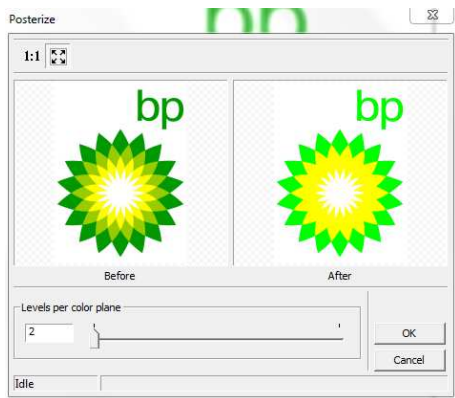





2. You can add an image by double-clicking it.

How to use Auto-Vecto:


1. Import an image by going to File, then import.

- Click on  on the right hand side. This will bring up this menu . You want to slide the “Small object eraser” as far to the right as you can, to avoid having too many points on your finished product. You will probably have to test this a few different ways to get the best results. The  tool will already be selected, so you can just click on your image.
- On the next window, the default number of colors is 2. You need to keep this number as low as possible, but adjust it **if** needed.



- Click okay and it will vectorize (create a line pattern that the cutter can recognize) your image.
- If you want to delete a point, select the  tool and then click on both of these icons   at the bottom so you can see all of the little points that the cutter is going to try to go to. Click and drag from top left to bottom right to select a point and press “Delete” on the keyboard. You can also click directly on a line to adjust it.

Rhinestones:

- To create a rhinestone pattern, select an object and then click the  icon located at the bottom.
- You always want to select the SS size that is one full size larger than your actual stones, otherwise they won't fall into the stencil. For example, for 3mm stones, you want to choose 13SS (3.2 – 3.4)mm, not 12SS (3.0 – 3.2)mm. You can change the spacing of the stones by typing in a new number in the Spacing box.
- If you would like to preview what the stones would look like, you can click on any of the images of stones, such as Amethyst.

4. To fill the project with stones, you can use Outline, Centerline, Fit, Standard, Horizontal Shift, Vertical Shift, Full or Partial. You will probably have to play with a few of these to figure out what works best for you and your pattern. Click "Apply" to see the results.
5. If you need to select several of the small circles created for the rhinestones, you can select one and then choose to either select all of the same color, all of the same size, or all of the same color AND size by clicking on Brush Color, Size, or Color+Size, respectively.
6. Before you finish you should click the "Stone Touch" button, this will zoom into any stones that are touching and therefore will not cut properly.

