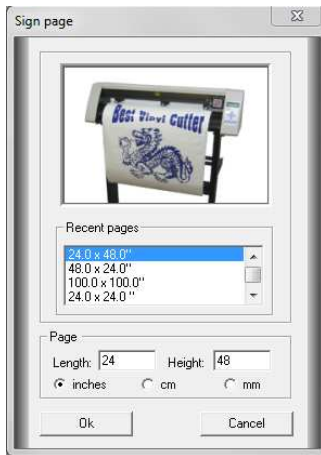
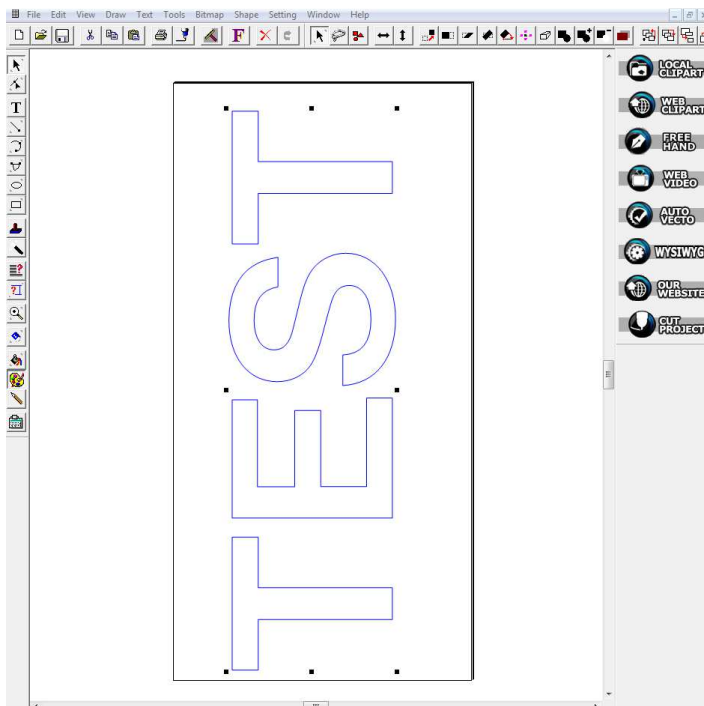



## HOW TO CUT IN PANELS – WINPCPRO 2012

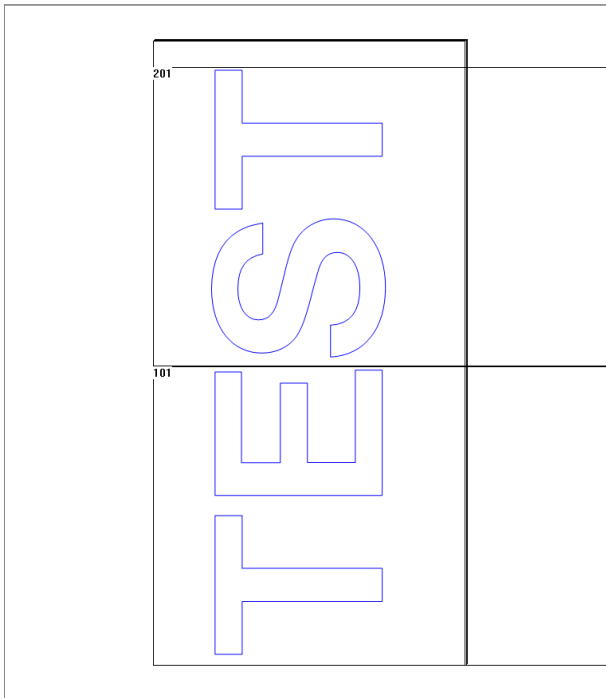
- 1.) Create a new document. Make it larger than the width of your cutting material.



- 2.) Import or create something to send. Make sure it almost fills the page.



- 3.) Open the cutting panel by pressing 
- 4.) Once the cutting panel is opened, you will see that the software has split your project into more than one panel.



5.) You can then select either one panel or both to send

