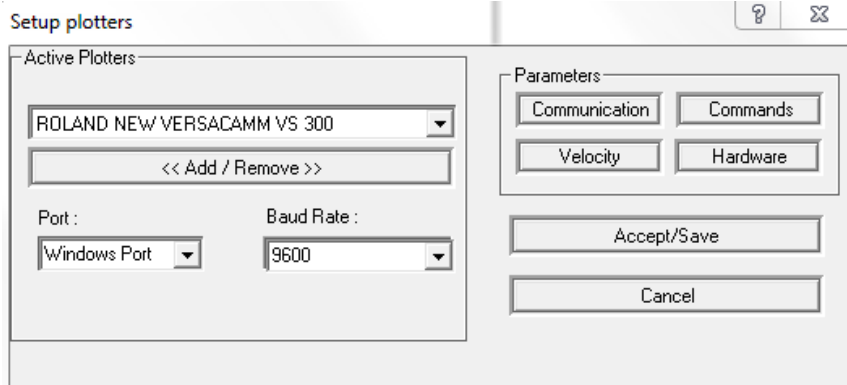
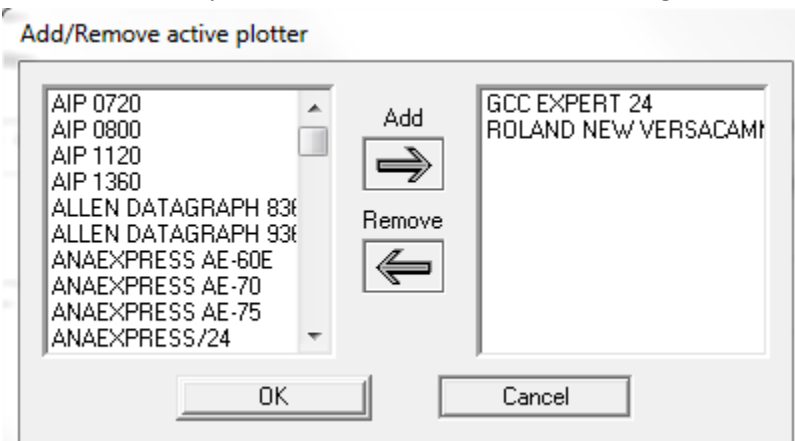


HOW TO ADD A CUTTER/PLOTTER TO WINPC SIGN PRO

1. Open WinPC SIGN.
2. Click on Setting -> Plotter Codes
3. Click on << Add / Remove >>

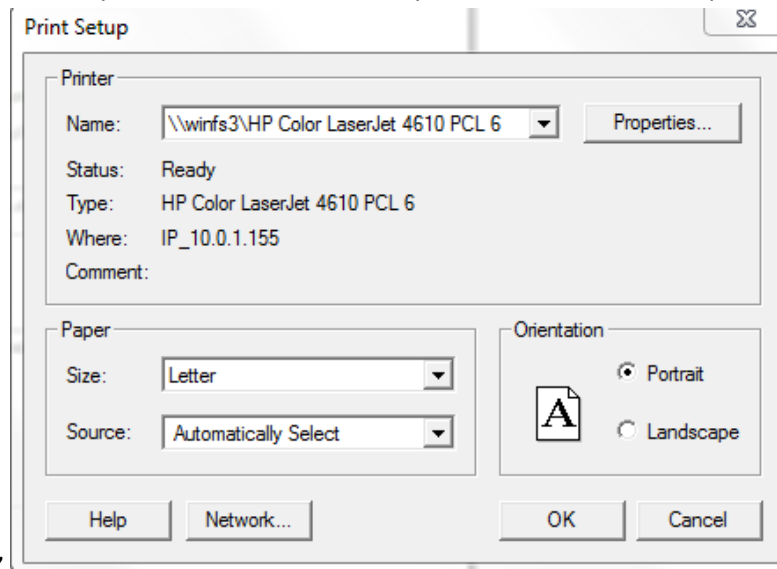


4. Select your cutter from the list on the left and click "Add" to add it (Alternatively, if you need to remove a cutter, you can select it from the list on the right and click "Remove.").



5. Under "Port" select "Windows Port." This will bring up the same "Print" window you are used to when you print from other applications. Select your cutter from the list, and press okay. Now WinPC will send to your cutter. "Windows Port" is the key.

6. Press "OK" when you're done. Then, select your Cutter from the drop down list labeled



"Printer." Press "OK" when you're done.

7. Then press "Accept/Save."